

Canon

Delighting You Always

 **PIXMA**
Quality. Promised.

image**PROGRAF**

Canon

Delighting You Always

SOUTH & SOUTHEAST ASIA REGIONAL HEADQUARTERS

CANON SINGAPORE PTE. LTD.

1 Fusionopolis Place #15-10, Galaxis Singapore 138522

Tel : 65-6799 8888

Fax : 65-6799 8882

www.canon-asia.com

CANON OFFICES

INDIA :

Canon India Pvt. Ltd.

Tel : 91-124-4160 000

Fax : 91-124-4160 011

www.canon.co.in

THAILAND :

Canon Marketing (Thailand) Co. Ltd.

Tel : 66-2-3449 999

Fax : 66-2-3449 988

www.canon.co.th

MALAYSIA :

Canon Marketing (Malaysia) Sdn. Bhd.

Tel : 603-7844 6000

Fax : 603-7845 0505

www.canon.com.my

www.imagestore.co.in

VIETNAM :

Canon Marketing Vietnam Co., Ltd.

Ho Chi Minh City

Office & Showroom

Tel : 84-8-382 00466

Fax : 84-8-382 00477

www.canon.com.vn

SINGAPORE :

Canon Singapore Pte. Ltd.

Tel : 65-6799 8888

Fax : 65-6799 8882

www.canon.com.sg

shop.canon.com.sg

CANON BUSINESS PARTNERS

BANGLADESH :

J.A.N. Associates

Tel: 880-2-8624 102

880-2-9660 359 / 9660 601

Fax: 880-2-8610 410

MYANMAR :

Myanmar Golden Rock

International Co. Ltd.

Tel: 95-1-654810 to 17

Fax: 95-1-654820

BRUNEI :

Interhouse Company

Tel: 673-2-653 001

Fax: 673-2-653 003

NEPAL :

International Electronics Concern

(P) Ltd.

Tel: 977-1-4421 991

Fax: 977-1-4421 909

CAMBODIA :

i-Click Marketing Co., Ltd.

Tel: 855-23-996 638

Fax: 855-23-996 639

PAKISTAN :

Shirazi Trading Co. (Pvt.) Ltd.

Tel: 9221-3241 7659

Fax: 9221-3241 7747

INDONESIA :

P. T. Datascrip

Tel: 021-2922 6000

Fax: 62-21-6544 811-13

www.canon.co.id

SRI LANKA :

Metropolitan Computers (Pvt.) Ltd.

Tel: 94-11-2437 797

Fax: 94-11-2448 980

MALDIVES :

SIMDI Office Automation

Tel: 960-333 4421

Fax: 960-333 4424

UNPARALLELED SHARPNESS

FROM SHOOT TO PRINT



image**PROGRAF** PRO-500



www.facebook.com/CanonPIXMA

Canon Singapore Pte Ltd. All rights reserved.

This document is for information purpose only and the contents are subject to change without notice. Product options, name and availability may vary by regions. Nothing in this document should be construed as a warranty. We expressly disclaim any liability or contractual obligations with respect to this document.

Dealer's Stamp

0200w556

PRO-1 · PRO-10 · PRO-100 · iP8770

OUTSTANDING
COLOUR ACCURACY IN
A2 EXHIBITION PRINTS

imagePROGRAF
PRO-500 NEW

The imagePROGRAF PRO-500 supports the finest of Canon's latest printing technologies. A new print head, improved ink set, and extensive support for fine art media results in stunning image quality for photographers who demand the highest print quality.

- **HIGH QUALITY PHOTO PRINTING UP TO A2 SIZE**
- **NEW 11-COLOUR LUCIA PRO PIGMENT INK SYSTEM WITH CHROMA OPTIMIZER**
- **ADVANCED 1.28-INCH PRINT HEAD WITH 18,432 NOZZLES**
- **POWERFUL L-COA PRO IMAGE PROCESSING SYSTEM**

HIGH SPEED PRINTING
UP TO A2 SIZE

The imagePROGRAF PRO-500 is powered by a new 1.28-inch print head packed with 18,432 ink nozzles, approximately 50% larger than that in the PIXMA PRO-1. The PRO-500 can lay down over 32 million ink droplets per second, delivering a high quality A2 bordered photo in just 6 minutes.

imagePROGRAF
PRO-500

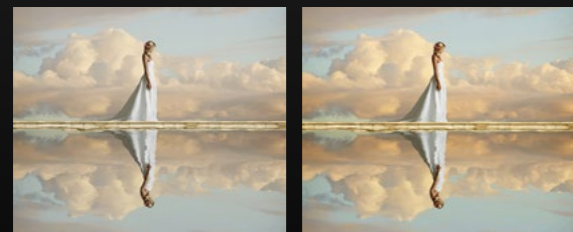
PHOTO PRINT SPEED

approx.
6 min. 00 sec.
Colour
A2+ Bordered
17x22" image

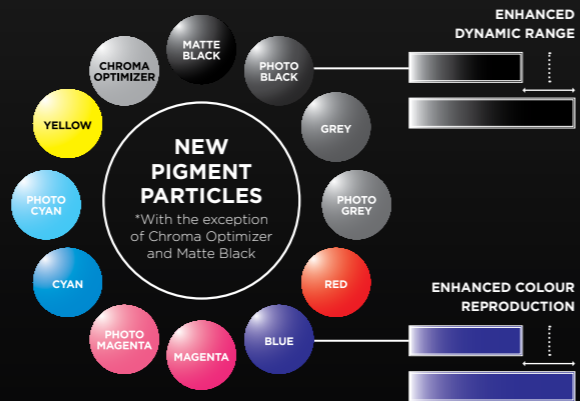


4pl Technology, LUCIA PRO Ink, L-COA PRO, Chroma Optimizer, A2/17"x22", Ethernet, Canon PRINT Inkjet/SELPHY, Canon Print Service, AirPrint, PictBridge, Print Studio Pro, 2-way (Rear)





PRO-1 PRO-500



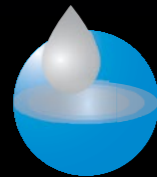
ARCHIVAL GRADE PIGMENT INKS

The LUCIA PRO system features an ink system of 11-colours with Chroma Optimizer ink. New fluxing materials and optimised resin results in denser ink particle distribution, producing a broader colour gamut and excellent expression in dark areas and shadows. Chroma Optimizer enables uniform light reflection, image clarity, and reduces bronzing effects, producing highly attractive photographic art that satisfies advanced enthusiasts and professionals alike.

ENHANCED DYNAMIC RANGE AND VIVID BLUES

The combination of 4 monochrome inks increases dynamic range, with grey and photo grey inks ensuring outstanding greyscale reproduction in lighter shadows. The introduction of blue ink extends reproducible colour gamut for even greater photo expression, ensuring accurate reproduction of blues from darker to electric shades.

SILICON OIL ADDED



IMPROVED SCRATCH RESISTANCE

Silicon oil is added to pigment ink particles, improving scratch resistance of printed surfaces. This is especially useful for batch print jobs and transportation of prints.

LARGER INK CARTRIDGES

80ml individual ink cartridges are designed for extended printing, minimising the frequency of cartridge changes and improving productivity.



EXTENDED PRINT LONGEVITY

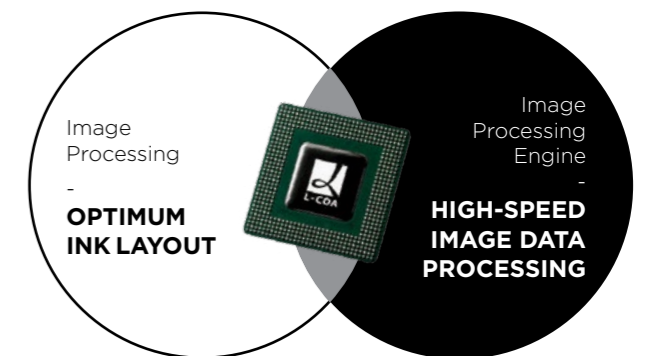
LUCIA PRO inks are designed for excellent print longevity, resisting fading and image degradation under common display conditions.

	GAS FASTNESS	LIGHT FASTNESS	ALBUM LIFE
Test Item	O ₃	Xenon	Album in dark area
Test Method	ISO	ISO	ISO
Criteria	JEITA	JEITA	JEITA
Photo Paper Pro Platinum	Approx. 60 years	Approx. 60 years	Approx. 200 years
Photo Paper Pro Luster	Approx. 60 years	Approx. 45 years	Approx. 200 years

L-COA PRO ADVANCED IMAGE PROCESSING ENGINE

Driving the imagePROGRAF PRO-500 is the next generation processing engine L-COA PRO, responsible for the balance of inks and precise placement of ink droplets. This powerful processor is paired with a massive 1GB of internal memory, enabling high speed processing of very large image files.

Together with the Canon Optimum Image Generating (OIG) System, first introduced in the PIXMA PRO-1, the result is superior colour reproduction, smooth tonal gradations, and uniform glossiness unmatched by any conventional inkjet printing system.

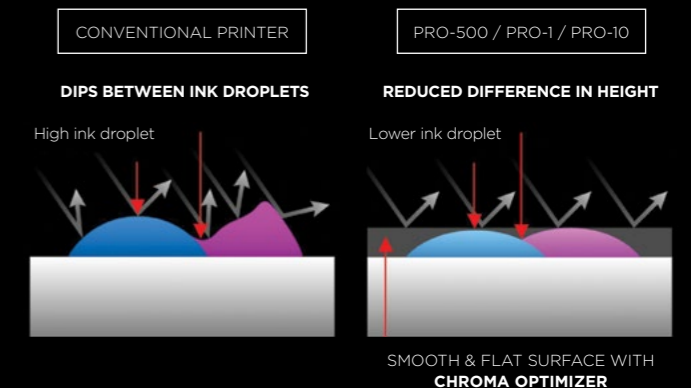


*Only applicable to PRO-500



CHROMA OPTIMIZER ELIMINATES GLOSS UNEVENNESS

Chroma Optimizer complements the characteristics of pigment ink by reducing the difference in ink droplet heights to form a flat and smooth coated layer. The result is evenly reflected light that reduces gloss unevenness, deeper blacks, heightened colour density and reduced metamerism.



*Features shown are available in certain models only. See specifications for details.



RELIABLE PAPER FEEDING

On the imagePROGRAF PRO-500, the inclusion of an Air Feeding System pulls paper flat during feeding, ensuring accuracy of ink droplet placement during printing. Built-in paper feed detection also prevents errors caused by feeding misalignment, ensuring productivity remains high.

VERSATILE PAPER HANDLING

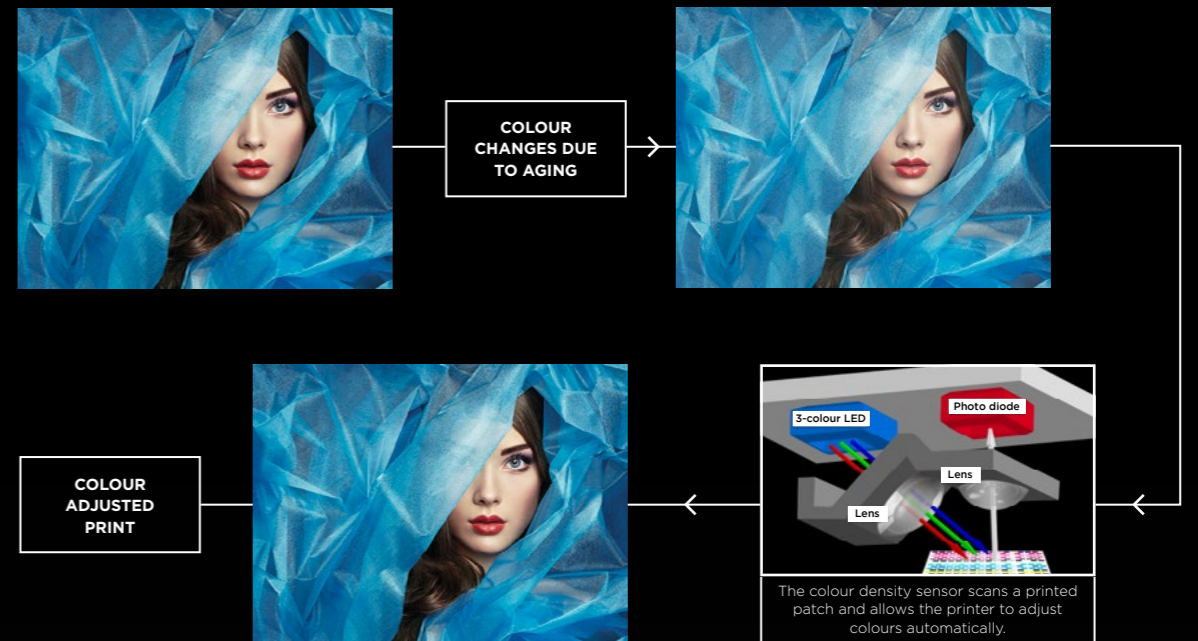
The Canon PRO series printers support professional photo printing on a wide variety of fine art and glossy photo papers. In addition to a rear tray for most types of papers, a fold-out manual feed tray located at the back of the printer makes it possible to insert thicker media types.



COLOUR STABILITY

COLOUR DENSITY SENSOR

The built-in colour density sensor is able to sense colour inconsistency, and activate colour calibration for easy colour adjustment, all possible without the need of an external spectrophotometer.



NON-FIRING INK NOZZLE DETECTION

During printing, ink ejection conditions are checked with sensors, and when a blockage on the print head is detected, another nozzle automatically provides backup. This prevents printing failures due to banding, and also reduces head cleaning frequencies.



INK EJECTION CONTROL

A temperature-regulated ink ejection system improves temperature detection accuracy for every colour matrix. This results in fine ejection control and reduces density and colour irregularities, ensuring error-free, high-quality prints that faithfully recreate every graphic detail.

PRINT STUDIO PRO PERFECT YOUR WORKFLOW

Print Studio Pro assists the print process following post-editing work in applications like Adobe Photoshop and Digital Photo Professional. With this solution, image data can be transferred seamlessly to the printer while retaining original image characteristics, thanks to a 16-bit processing engine.

The printing workflow is highly streamlined, keeping productivity at optimal levels by maintaining a familiar user interface that offers immense ease of use, ensuring a superior user experience from shoot, post-editing, to print.

The latest version of Print Studio Pro comes included with Contrast Reproduction, which when used in combination with the Digital Lens Optimizer in Digital Photo Professional, allows for the printing of sharp, high-definition images without losing any original qualities from when the image was taken.

PRO GALLERY PRINT

Showcase your portfolio to friends, family, and clients easily with the PRO GALLERY PRINT app for iPad® devices. With this application, you can also collaborate with other photography web services like SmugMug and Zenfolio, and print from them on your printer.

COLOUR MANAGEMENT TOOL PRO

Colour Management Tool Pro creates ICC profiles for the media you choose to work with. The Colour Management Tool Pro is available with the tools from x-Rite, i1 Pro without UV Cutoff filter, i1 Pro with UV Cutoff filter, and ColorMunki Photo/Munki Design.

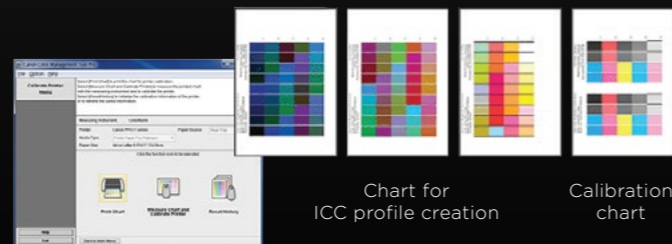


Chart for ICC profile creation
Calibration chart



COLOUR MODES ICC PROFILE

With ICC profiles, the printers will print true to the characteristics of various media types. Through the use of Print Studio Pro, the ICC profiles will also print images in the Adobe® RGB (1998) colour space.

LINEAR TONE

This mode is designated to print images in their most accurate forms. This is accomplished by reflecting image adjustment results, where the gradation balance is maintained in good order.



PHOTO COLOUR

With this mode, it enhances image colours based on human perceptions, resulting in an improved, colour-adjusted print.



PRO MODE

Based on the display, the Pro Mode helps to map colour gamut for optimum brightness and saturation. It also further helps to adjust colour by reflecting characteristics of human perception, resulting in enhanced colour adaptations and equal hue planes.

PRINTER MANAGEMENT SOLUTIONS

QUICK UTILITY TOOL BOX MANAGE MULTIPLE PRINTERS EFFICIENTLY

Canon's Quick Utility Tool Box offers you hassle-free access to supporting utilities and settings. From printer information, speed dial and destination folder settings to scanning and cloud sharing, simply launch your preferred function from the shortcut menu on your printer.

MEDIA CONFIGURATION TOOL OPTIMAL PRODUCTIVITY

Media Configuration Tool* enables you to customise media in both the driver and printer. Make adjustments on the print head height and vacuum strength for optimal quality across a broad range of media options.

ACCOUNTING MANAGER CONVENIENT COST TRACKING

Accounting Manager* is ideal for businesses looking to track printing costs based on the cost of media and ink.

DEVICE MANAGEMENT CONSOLE ALL-IN-ONE PRINTER MONITORING

Device Management Console* effectively manages multiple printers, monitoring activities such as error messages and printer information like the status of calibrations.

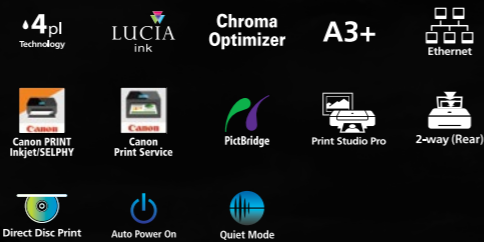


*Features shown are available in certain models only. See specifications for details.



PHOTO PRINT SPEED
 approx.
2 min. 55 sec.
 Colour
 A3+ Bordered
 11x14" image

- 11-Colour LUCIA pigment ink system with Chroma Optimizer for uniform glossiness and reduced bronzing
- 5 Monochrome inks for enhanced dynamic range and greyscale reproduction
- Print up to A3+ size
- Supports a wide variety of fine art textured and glossy papers
- Print Studio Pro plugin software for streamlined workflow



PIXMA PRO-1

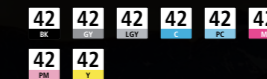
FOR TRUE WORKS OF ART

With 5 monochrome inks, the PIXMA PRO-1 is a perfect addition for photographers looking to enhancing the expressive quality of their prints.



PHOTO PRINT SPEED
 approx.
1 min. 30 sec.
 Colour
 A3+ Bordered
 11x14" image

- 8-Colour dye-based ink system with 3 monochrome inks
- Supports ChromaLife100+ for outstanding print longevity with selected Canon photo papers
- Print up to A3+ size
- Supports a wide variety of fine art and glossy papers
- Print Studio Pro plugin software for streamlined workflow



PIXMA PRO-100

COLOURS THAT STAND OUT

With an 8-colour ink system, the PIXMA PRO-100 is suitable for photographers working with vibrant, bright colours.

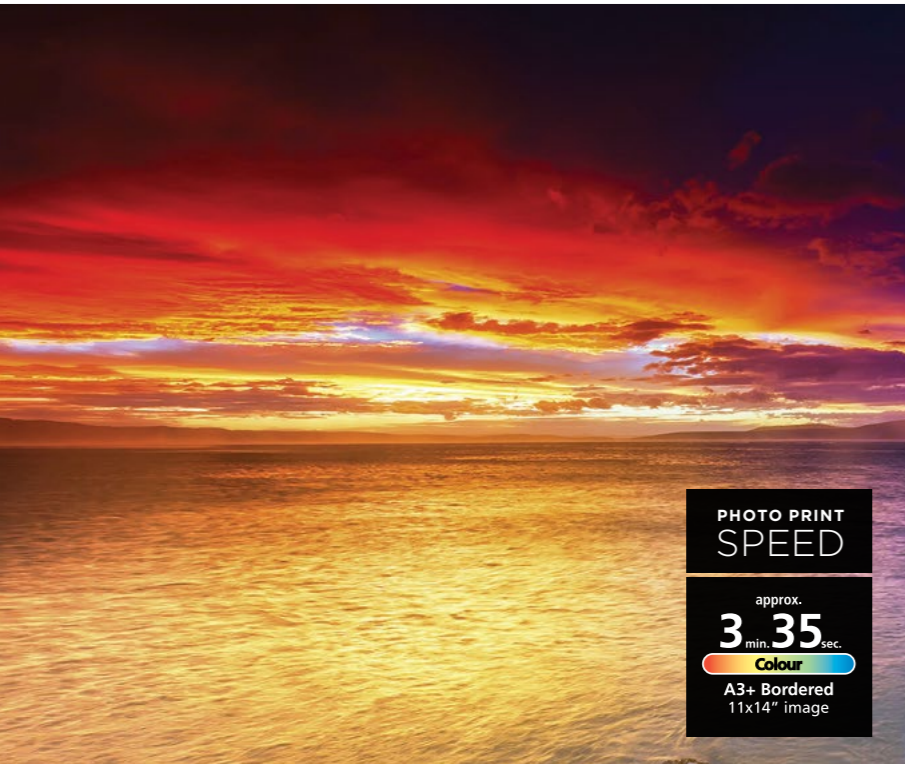


PHOTO PRINT SPEED
 approx.
3 min. 35 sec.
 Colour
 A3+ Bordered
 11x14" image

- 9-Colour LUCIA pigment ink system with Chroma Optimizer for uniform glossiness and reduced bronzing
- 3 Monochrome inks for outstanding greyscale reproduction
- Print up to A3+ size
- Supports a wide variety of fine art textured and glossy papers
- Print Studio Pro plugin software for streamlined workflow



PIXMA PRO-10

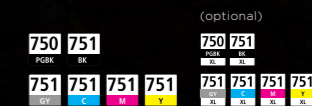
WHEN EVERY DETAIL MATTERS

Equipped with a 10-colour LUCIA ink system, the PIXMA PRO-10 is ideal for the printing of photographs with smooth gradations and rich colours.



PHOTO PRINT SPEED
 approx.
2 min. 00 sec.
 Colour
 A3+ Bordered
 11x14" image

- 6-Colour ink system including grey ink for enhanced greyscale reproduction
- Print up to A3+ size
- Mobile Printing: Canon PRINT Inkjet/SELPHY and Canon Print Service*
- Cloud Printing: Google Cloud Print
- Create custom DVD/CD disc designs with direct disc printing



PIXMA i8770

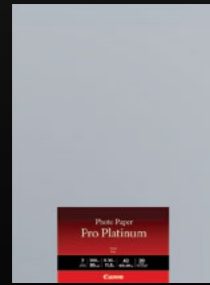
PHOTO QUALITY WITH OUTSTANDING VERSATILITY

Outfitted with wireless capabilities, the i8770 is ideal for photographers looking for quality with convenience.

THE PERFECT FINISH

Canon offers a wide range of specialty photo papers, each designed with unique traits to bring out the best in your photos.

PHOTO PRINTING



PT-101
Photo Paper Pro Platinum (Super High Gloss)
• 300g/m²
• 4x6", A4, A3, A3+, A2

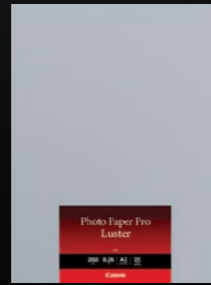


GP-508
Glossy Photo Paper "Everyday Use"
• 210g/m²
• 4x6", A4



GP-601
Glossy Photo Paper "Everyday Use"
• 210g/m²
• 4x6", A4

STUDIO QUALITY PRINTING



LU-101
Photo Paper Pro Luster
• 260g/m²
• A4, A3, A3+, A2



PM-101
Photo Paper Pro Premium Matte
• 210g/m²
• A4, A3, A3+, A2

SPECIAL PROJECTS



PP-201
Photo Paper Plus Glossy II
• 275g/m²
• 4x6", A4



PP-201
Photo Paper Plus Glossy II
• 275g/m²
• A3, A3+



SG-201
Photo Paper Plus Semi-Gloss
• 260g/m²
• 4x6", 8x10", A4, A3, A3+



MP-101
Matte Photo Paper
• 170g/m²
• 4x6", A4, A3

Canon professional photo printers support a variety of third party media. For more information, please visit www.canon-asia.com.

PAPER TERMINOLOGY

Here are a few terms you will need to know while searching for the right paper to help you produce photo lab-quality prints right at home.

SMOOTH
Ideal for printing projects that are heavy in typography, have definitive shapes, or have a high black and white contrast. Designed to help your colours stay in place and to be less susceptible to spreading and mixing, also known as "bleeding", it helps to deliver a more crisp and vivid picture.

ROUGH
Superb for gallery quality, high-end printing, this type of finish has a unique "canvas-like" quality.

THICKNESS / WEIGHT
Refers to the durability of your paper and the amount of ink it is designed to hold without compromising the integrity of the document. Thinner/lighter papers are ideal for quick prints, typography, rough drafts, etc. Thicker/heavier papers are more commonly designed for photos, scrapbooking, crafts, etc.

BRIGHTNESS
Commonly graded on a scale of 1-100, with 100 being the brightest. The brighter and whiter your paper, the lighter your prints will be. A duller paper will produce more muted tones/darker images.

MATTE
The finish is designed to prevent pesky lighting reflections or fingerprint smudges you often see on glossy prints. You get less dynamic range than the other photo papers, but they are great for scrapbooking projects, bulletin boards, cards and invitations.

SEMI-GLOSS
Offers a great compromise between a matte and glossy finish. Helps to reduce issues with glare, dust and fingerprints. Durability (paper weight / thickness) typically falls right in the middle. Great for your everyday picture frames and ideal for those with a matte border.

HIGH GLOSS
Delivers a studio finish with the most vivid colours, outstanding contrast of light and dark, and high durability. With this paper type, you may experience glares under harsh lighting conditions and your prints may attract fingerprint marks because of the glossy finish. High gloss paper is frequently used by professionals and photography students.

GLOSSY
Offers tremendous colour range, resolution and durability. The most practical use for glossy photos is in the creation of portfolios, photo albums, and for photos which are to be displayed behind plastic or glass.

	imagePROGRAF PRO-500 <small>NEW</small>	PIXMA PRO-1	PIXMA PRO-10	PIXMA PRO-100	PIXMA iP8770
PHOTO PRINT SPEED	approx. 6:00 sec. A2+ Bordered 17x22" image	approx. 2:55 sec. A3+ Bordered 11x14" image	approx. 3:35 sec. A3+ Bordered 11x14" image	approx. 1:30 sec. A3+ Bordered 11x14" image	approx. 2:00 sec. A3+ Bordered 11x14" image
INK SYSTEM	 12 Single Inks LUCIA PRO ink	 12 Single Inks LUCIA ink	 10 Single Inks LUCIA ink	 8 Single Inks LUCIA ink	 6 Single Inks LUCIA ink
CARTRIDGE MODEL	 MC-20 (maintenance cartridge) icon needed	 29	 72	 42	 751 (optional) 751
PAPER-FEEDING SYSTEM	 2-way (Rear)	 2-way (Rear)	 2-way (Rear)	 2-way (Rear)	 Rear Tray Feeding
DVD / CD PRINT	—	 Direct Disc Print	 Direct Disc Print	 Direct Disc Print	 Direct Disc Print
MAIN CONNECTIVITY	 Wi-Fi CERTIFIED, Ethernet, USB	 Wi-Fi CERTIFIED, Ethernet, USB	 Wi-Fi CERTIFIED, Ethernet, USB	 Wi-Fi CERTIFIED, Ethernet, USB	 Wi-Fi CERTIFIED, Ethernet, USB
DIRECT PRINTING	 PictBridge	 PictBridge	 PictBridge	 PictBridge	 PictBridge
WIRELESS MOBILE PRINTING	 Canon PRINT Inkjet/SELPHY, Canon Print Service	 Canon PRINT Inkjet/SELPHY, Canon Print Service	 Canon PRINT Inkjet/SELPHY, Canon Print Service, AirPrint	 Canon PRINT Inkjet/SELPHY, Canon Print Service, AirPrint	 Canon PRINT Inkjet/SELPHY, Canon Print Service, AirPrint
OTHER FEATURES	 Chroma Optimizer, Print Studio Pro	 Chroma Optimizer, Print Studio Pro	 Chroma Optimizer, Print Studio Pro	 Chroma Optimizer, Print Studio Pro	 Chroma Optimizer, Print Studio Pro
DISPLAY TYPE	 3.0 type TFT				

SPECIFICATIONS			imagePROGRAF PRO-500	PIXMA PRO-1	PIXMA PRO-10	PIXMA PRO-100	PIXMA iP8770								
PRINT	Maximum Printing Resolution ¹		2400 x 1200 dpi		4800 x 2400 dpi		9600 x 2400 dpi								
	Number of Colours		11 Colours with Chroma Optimizer		11 Colours with Chroma Optimizer		9 Colours with Chroma Optimizer								
	Print Speed ²	Photo (17x22" Image on A2 with Border)	Black & White / Colour PT-101	approx. 6min.		NA		NA							
			Black & White / Colour LU-101	approx. 3min.35sec.		NA		NA							
	Photo (11x14" Image on A3+ with Border)	Black & White / Colour PT-101	Black & White / Colour PP-201	approx. 3min.35sec.		approx. 4min. 20sec.		approx. 5min. 20sec.							
			Black & White / Colour SG-201	approx. 3min.55sec. / 2min. 30sec.		NA / 2min. 55sec.		approx. 5min. 20sec. / 3min. 35sec.							
			Black & White / Colour PP-201	approx. 3min.55sec. / 2min. 30sec.		NA / 2min. 55sec.		approx. 5min. 20sec. / 3min. 35sec.							
			Black & White / Colour LU-101	approx. 2min. 30sec.		NA		approx. 5min. 20sec. / 3min. 35sec.							
	Photo (4x6")	PT-201 / Borderless	approx. 1min. 25sec.		approx. 2min. 05sec.		approx. 1min. 45sec.								
	Printing Capability	Borderless Printing ³		Up to A2		Up to A3+		Up to A3+							
Standard Paper Input (Rear Tray)	Plain Paper (Sheets)				NA		A3 / A4 / A5 / B4 /B5 / Letter / Legal = 150								
	Photo Paper (Based on Photo Paper Pro Platinum (PT101). For detailed information on paper compatibility, please visit www.canon-asia.com)		4x6" = 20, A3+, A3, A4 = 10, A2 = 1		4x6" = 20, A3, A4 = 10, A3+ = 1										
Disc Handling			NA		1 (Manual handling by disc tray)										
Additional Feed Slot For Thick Papers				Yes		NA									
NETWORK / SYSTEM REQUIREMENTS & GENERAL SPECIFICATIONS	Windows	(Please visit www.canon-asia.com to confirm OS compatibility and to download the latest driver updates)	Windows 10 / Windows 8 / Windows 7 / Windows Vista SP2		Windows 10 / Windows 8 / Windows 7 / Windows Vista / Windows XP										
	Macintosh		Mac OS X v10.7.5 and later		Mac OS X v10.5 and later		Mac OS X v10.6.8 and later								
	Interface	Wireless LAN IEEE 802.11 b/g/n, 100 Base-TX / 10 Base-T, USB 2.0 Hi-Speed, Wired/Wireless PictBridge		100 Base-TX / 10 Base-T, USB 2.0 Hi-Speed, PictBridge		Wireless LAN IEEE 802.11 b/g/n, 100 Base-TX /10 Base-T, USB 2.0 Hi-Speed, PictBridge		Wireless LAN IEEE 802.11 b/g/n, USB 2.0 Hi-Speed							
	Mobile Printing Applications	Canon PRINT Inkjet/SELPHY, Canon PRO Gallery Print		Canon PRINT Inkjet/SELPHY		Canon PRINT Inkjet/SELPHY, Canon PRO Gallery Print		Canon PRINT Inkjet/SELPHY							
	Other Connectivity Features	Canon Print Service, PIXMA Cloud Link, AirPrint™		Canon Print Service		Canon Print Service, AirPrint™		Canon Print Service, AirPrint™, Google Cloud Print™, Wireless PictBridge							
	Maintenance Cartridge	MC-20				NA									
	Power Consumption	approx. 37W (2.5W Standby)		approx. 24W (1.6W Standby)		approx. 17W (2.3W Standby)		approx. 19W (2.3W Standby)							
	Dimensions (W x D x H)	approx. 723 x 433 x 285mm		approx. 695 x 462 x 239mm		approx. 689 x 385 x 215mm		approx. 689 x 385 x 215mm							
	Weight	approx 32kg		approx 27.7kg		approx 20.0kg		approx 19.7kg							
PAGE YIELD	A2 Colour Photo Paper PT-101 (ISO/ JIS-SCID N5 test file) ⁴ (Pages)		PFI-50C: 675 PFI-50M: 965 PFI-50Y: 329 PFI-50PC: 600	PFI-50PM: 374 PFI-50R: 935 PFI-50MBK:1600 PFI-50PBK: 256	PFI-50BL: 545 PFI-50GY: 106 PFI-50LG: 270 PFI-50CO: 97	NA									
	A2 Mono Photo Paper PT-101 (ISO/ JIS-SCID N5 MONO test file) ⁴ (Pages)		PFI-50C: 1000 PFI-50M: 1675 PFI-50Y: 1365 PFI-50PC: 570	PFI-50PM: 387 PFI-50R: 1430 PFI-50MBK: 1535 PFI-50PBK: 254	PFI-50BL: 2420 PFI-50GY: 86 PFI-50LG: 88 PFI-50CO: 101	NA									
	A3* Colour Photo Paper PT-101 (ISO/ JIS-SCID N2 test file) ⁵ (Pages)		PFI-50C: 1055 PFI-50M: 1495 PFI-50Y: 515 PFI-50PC: 940	PFI-50PM: 585 PFI-50R: 1455 PFI-50MBK: 2500 PFI-50PBK: 392	PFI-50BL: 845 PFI-50GY: 167 PFI-50LG: 425 PFI-50CO: 156	PGI-29C: 230 PFI-29M: 281 PFI-29Y: 290 PFI-29PC: 400 ⁷	PGI-29PM: 228 PFI-29R: 454 ⁷ PFI-29MBK: 505 ⁷ PFI-29PBK: 111	PGI-29DGY: 119 PFI-29GY: 179 PFI-29LG: 352 ⁷ PFI-29CO: 90	PGI-72C: 75 PFI-72M: 83 PFI-72Y: 83 PFI-72PC: 86 ⁷	PGI-72PM: 69 PFI-72R: 132 ⁷ PFI-72MBK: 238 ⁷ PFI-72PBK: 45	PGI-72GY: 31 PFI-72CO: 31	CLI-42C: 53 PFI-42M: 49 PFI-42Y: 52 PFI-42BK: 62 ⁷	CLI-42GY: 66 PFI-42LG: 142 ⁷ PFI-42PC: 59 ⁷ PFI-42PM: 38	NA	
	A3* Mono Photo Paper PT-101 (ISO/ JIS-SCID N2 MONO test file) ⁵ (Pages)			NA	PGI-29C: 640 ⁷ PFI-29M: 750 ⁷ PFI-29Y: 605 ⁷ PFI-29PC: 253 ⁷	PGI-29PM: 192 ⁷ PFI-29R: 820 ⁷ PFI-29MBK: 472 ⁷ PFI-29PBK: 106	PGI-29DGY: 79 PFI-29GY: 138 ⁷ PFI-29LG: 115 PFI-29CO: 84	PGI-72C: 164 ⁷ PFI-72M: 230 ⁷ PFI-72Y: 232 ⁷ PFI-72PC: 87 ⁷	PGI-72PM: 76 PFI-72R: 280 ⁷ PFI-72MBK: 174 ⁷ PFI-72PBK: 35	PGI-72GY: 23 PFI-72CO: 28	CLI-42C: 645 ⁷ PFI-42M: 770 ⁷ PFI-42Y: 158 ⁷ PFI-42BK: 49	CLI-42GY: 32 PFI-42LG: 21 PFI-42PC: 71 ⁷ PFI-42PM: 70 ⁷	NA		
	4x6" Photo Paper PT-101 / PP-201 (iP8770) (ISO/ IEC 29103 test file) ⁶ (Pages)			NA	PGI-29C: 1800 ⁷ PFI-29M: 1755 ⁷ PFI-29Y: 1280 PFI-29PC: 1375 ⁷	PGI-29PM: 1055 PFI-29R: 2460 ⁷ PFI-29MBK: 1345 ⁷ PFI-29PBK: 1225 ⁷	PGI-29DGY: 670 PFI-29GY: 790 PFI-29LG: 1320 ⁷ PFI-29CO: 429	PGI-72C: 452 ⁷ PFI-72M: 685 ⁷ PFI-72Y: 430 ⁷ PFI-72PC: 346	PGI-72PM: 303 PFI-72R: 1000 ⁷ PFI-72MBK: 1100 ⁷ PFI-72PBK: 430 ⁷	PGI-72GY: 172 PFI-72CO: 181	CLI-42C: 484 ⁷ PFI-42M: 410 ⁷ PFI-42Y: 279 PFI-42BK: 810 ⁷	CLI-42GY: 452 ⁷ PFI-42LG: 855 ⁷ PFI-42PC: 269 PFI-42PM: 206	CLI-75C: 153 PFI-75M: 153 PFI-75Y: 153 PFI-75IGY: 126 PFI-75IBK: 337 ⁷ PFI-750PGBK: 2070 ⁷	OPTIONAL CLI-75IC XL: 374 PFI-75IM XL: 374 PFI-75IY XL: 374 PFI-75IGY XL: 275 PFI-75IBK XL: 870 ⁷ PFI-750PGBK XL: 4775 ⁷	

Specifications are subject to change without notice.

*1 Ink droplets can be placed with a pitch of 1/2400 or 1/4800 or 1/9600 inch at minimum

*2 Photo print speed is based on the default setting using ISO/JIS-SCID N5 (PRO-500) or ISO / JIS-SCID N2 on Photo Paper Pro Platinum / Photo Paper Plus Glossy II (iP8770) and does not take into account data processing time on host computer. Print speed may vary depending on system configuration, interface, software, document complexity, print mode, paper coverage, type of paper used etc.

*3 Paper types NOT supported for borderless printing are as follows: Envelope, High Resolution Paper, T-shirt Transfer, Photo Stickers, Plain Paper and other fine art paper

*4 Data is calculated figure. Measured by ISO 29103.

*5 When printing ISO / JIS-SCID N2 test file at 11 x 14" size continuously on A3+ Photo Paper Pro Platinum with the default settings of testing paper using Windows 7 printer driver and PhotoShop CS3.

*6 Declared yield value in accordance with ISO / IEX 24711 (for A4 size) using ISO / IEC 24712 test file; and ISO / IEC 29102 (for 4x6" size) using ISO / IEC 29103 test file. Values obtained by continuous printing.

*7 Estimated Supplemental Yield

Note: All printers work in Operation Environment of Temperature: 5-35°C;
Humidity: 10-90% RH (no dew condensation).

Recommended Environment of Temperature: 15-30°C;
Humidity: 10-80% RH (no dew condensation)

All printers work in Storage Environment of Temperature: 0-40°C;
Humidity: 5-95% RH (no dew condensation)